

lui pico flat (ceiling) cutsheet

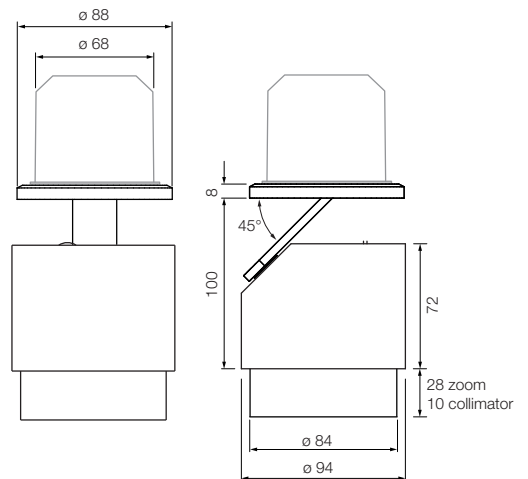
LED ceiling or wall mounted luminaire with cylindrical head and interchangeable lenses. Version with a flat base for mounting on cavity or ceiling box, power supply with constant voltage source (converter). Freely moveable through Occhio 3d-kinematics with two axes of rotation at an angle of 45° to each other. Removable head for maintenance purposes, replaceable LED chip.

Available with a zoom lens for beam characteristics continuously adjustable from 20° to 60° or alternatively with a collimator lens with different inserts.

Power 18 W, dimmable via dimmable ballast on site or via slider on the back of the head.

The finishes of the head, optics, arm and base are freely configurable.

More versions: pico up (with surface mounted converter), pico track (with track mounted converter box).



materials light fixture
aluminium, steel
chrome-plated, painted
or anodised, plastic

materials inserts
glass, optical plastic

surface head, base
chrome, matt chrome,
glossy white (bianco),
matt white,
glossy black (nero),
matt black

surface optic
chrome, matt chrome,
matt white,
matt black,
gold anodised

surface body
chrome, matt chrome,
matt white, matt black

rotatability head
360°

rotatability body
360° (with stop)

weight
1,0 kg

dimming function
slider control at the
back of the head or
external with trailing
edge phase-cut dimmer

ECG (driver)
external driven by
constant voltage
source 48V DC /
min. 22 W

Occhio »next generation« LED

			LED high color		LED high flux		
			Ra 95	Ra 95	Ra 85	Ra 85	Ra 85
supply voltage	U 48 V DC (min. 22 W)	color rend. index	2700 K	3000 K	3000 K	3500 K	4000 K
average lifetime	t > 50.000 h	color temperature	residential and public		public		
efficiency class	EEC A + / A	recommended usage					
power	P 18 W	luminous flux* LED ϕ	1650 lm	1650 lm	2000 lm	2000 lm	2000 lm
power	P 13 W (head chrome)	luminous flux* LED ϕ	1200 lm	1200 lm	1500 lm	1500 lm	1500 lm

* Effectively measured values at operating temperature. Nominal values from LED manufacturer are up to 20 % higher.



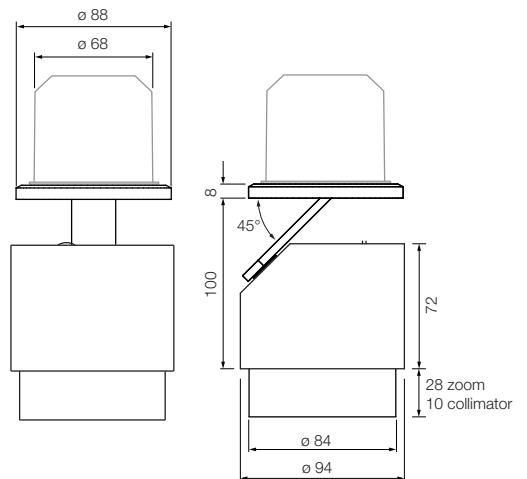
lui pico flat (ceiling) »cc« cutsheet

LED ceiling or wall mounted luminaire with cylindrical head and interchangeable lenses. Version with a flat base for mounting on cavity or ceiling box, power supply with constant current source (driver). Freely moveable through Occhio 3d-kinematics with two axes of rotation at an angle of 45° to each other. Removable head for maintenance purposes, replaceable LED chip.

Available with a zoom lens for beam characteristics continuously adjustable from 20° to 60° or alternatively with a collimator lens with different inserts.

Power 18 W, dimmable via dimmable ballast on site.

The finishes of the head, optics, arm and base are freely configurable.



materials light fixture
aluminium, steel
chrome-plated, painted
or anodised, plastic

materials inserts
glass, optical plastic

surface head, base
chrome, matt chrome,
glossy white (bianco),
matt white,
glossy black (nero),
matt black

surface optic
chrome, matt chrome,
matt white,
matt black,
gold anodised

surface body
chrome, matt chrome,
matt white, matt black

rotatability head
360°

rotatability body
360° (with stop)

weight
1,0 kg

dimming function
slider control at the
back of the head or
external with trailing
edge phase cut
dimmer, push button,
DALI

ECG (driver)
external driven by
constant current
source max: 500 mA /
> 36 V DC

Occhio »next generation« LED

average lifetime efficiency class	t > 50.000 h EEC A + / A	color rend. index color temperature	CRI T	LED high color		LED high flux		
				Ra 95 2700 K	Ra 95 3000 K	Ra 85 3000 K	Ra 85 3500 K	Ra 85 4000 K
				residential and public		public		
power supply voltage	P I 18 W max. 500 mA (> 36 V DC)	luminous flux* LED ø		1650 lm	1650 lm	2000 lm	2000 lm	2000 lm
power supply voltage	P I 13 W (head chrome) max. 350 mA (> 36 V DC)	luminous flux* LED ø		1200 lm	1200 lm	1500 lm	1500 lm	1500 lm

* Effectively measured values at operating temperature. Nominal values from LED manufacturer are up to 20 % higher.



lui pico flat (wall) cutsheet

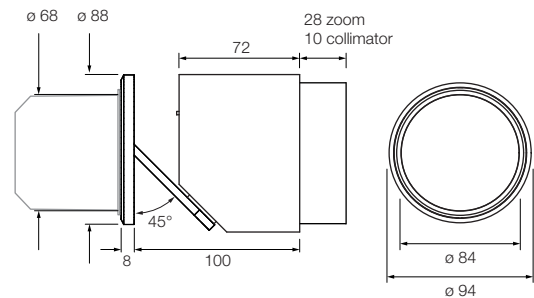
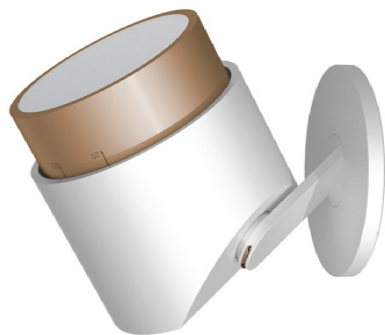
LED ceiling or wall mounted luminaire with cylindrical head and interchangeable lenses. Version with a flat base for mounting on cavity or ceiling box, power supply with constant voltage source (converter). Freely moveable through Occhio 3d-kinematics with two axes of rotation at an angle of 45° to each other. Removable head for maintenance purposes, replaceable LED chip.

Available with a zoom lens for beam characteristics continuously adjustable from 20° to 60° or alternatively with a collimator lens with different inserts.

Power 18 W, dimmable via dimmable ballast on site or via slider on the back of the head.

The finishes of the head, optics, arm and base are freely configurable.

More versions: pico up (with surface mounted converter).



materials light fixture
aluminium, steel
chrome-plated, painted
or anodised, plastic

materials inserts
glass, optical plastic

surface head, base
chrome, matt chrome,
glossy white (bianco),
matt white,
glossy black (nero),
matt black

surface optic
chrome, matt chrome,
glossy white (bianco),
matt white,
matt black,
gold anodised

surface body
chrome, matt chrome,
matt white, matt black

rotatability head
360°

rotatability body
360° (with stop)

weight
1,0 kg

dimming function
slider control at the
back of the head or
external with trailing
edge phase-cut dimmer

ECG (driver)
external driven by
constant voltage
source 48V DC /
min. 22 W

Occhio »next generation« LED

				LED high color		LED high flux		
supply voltage	U	48 V DC (min. 22 W)	color rend. index	CRI	Ra 95	Ra 95	Ra 85	Ra 85
average lifetime	t	> 50.000 h	color temperature	T	2700 K	3000 K	3000 K	3500 K
efficiency class	EEC	A + / A	recommended usage		residential and public	public		
power	P	18 W	luminous flux* LED ø		1650 lm	1650 lm	2000 lm	2000 lm
power	P	13 W (head chrome)	luminous flux* LED ø		1200 lm	1200 lm	1500 lm	1500 lm

* Effectively measured values at operating temperature. Nominal values from LED manufacturer are up to 20 % higher.



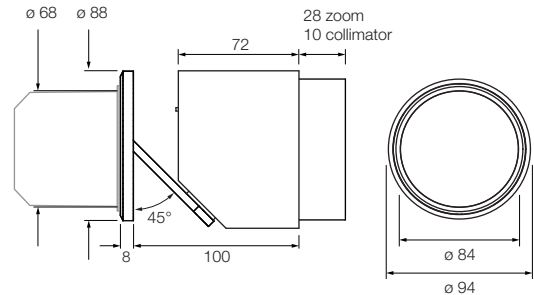
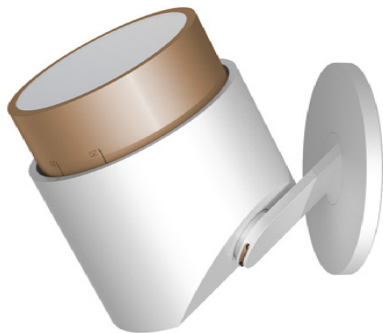
lui pico flat (wall) »cc« cutsheet

LED ceiling or wall mounted luminaire with cylindrical head and interchangeable lenses. Version with a flat base for mounting on cavity or ceiling box, power supply with constant voltage source (converter). Freely moveable through Occhio 3d-kinematics with two axes of rotation at an angle of 45° to each other. Removable head for maintenance purposes, replaceable LED chip.

Available with a zoom lens for beam characteristics continuously adjustable from 20° to 60° or alternatively with a collimator lens with different inserts.

Power 18 W, dimmable via dimmable ballast on site.

The finishes of the head, optics, arm and base are freely configurable.



materials light fixture
aluminium, steel
chrome-plated, painted
or anodised, plastic

materials inserts
glass, optical plastic

surface head, base
chrome, matt chrome,
glossy white (bianco),
matt white,
glossy black (nero),
matt black

surface optic
chrome, matt chrome,
matt white,
matt black,
gold anodised

surface body
chrome, matt chrome,
matt white, matt black

rotatability head
360°

rotatability body
360° (with stop)

weight
1,0 kg

dimming function
slider control at the
back of the head or
external with trailing
edge phase cut
dimmer, push
button, DALI

ECG (driver)
external driven by
constant current
source max. 500 mA /
> 36 V DC

Occhio »next generation« LED

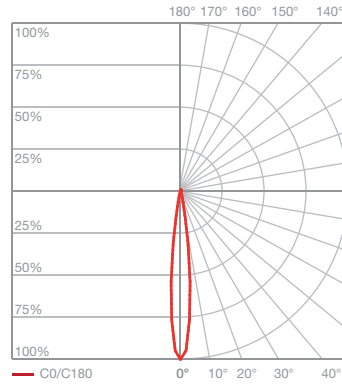
average lifetime efficiency class	t > 50.000 h EEC A + / A	color rend. index color temperature	CRI T	LED high color		LED high flux		Ra 85 4000 K
				Ra 95 2700 K	Ra 95 3000 K	Ra 85 3000 K	Ra 85 3500 K	
				residential and public		public		
power supply voltage	P 18 W I max. 500 mA (> 36 V DC)	luminous flux* LED ø		1650 lm	1650 lm	2000 lm	2000 lm	2000 lm
power supply voltage	P 13 W (head chrome) I max. 350 mA (> 36 V DC)			1200 lm	1200 lm	1500 lm	1500 lm	1500 lm

* Effectively measured values at operating temperature. Nominal values from LED manufacturer are up to 20 % higher.



lui lighting effects LED

 zoom



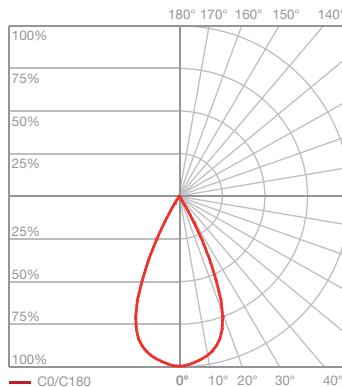
lui Z

directed light
beam angle approx. 20°

insert: zoom-objektiv 20°
soft edge filter

luminous flux: high color 18 W 830 lm
high flux 18 W 1010 lm

head chrome high color 13 W 600 lm
high flux 13 W 750 lm



lui Z

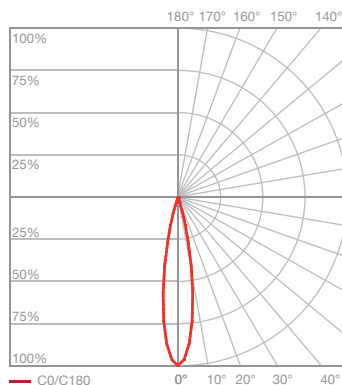
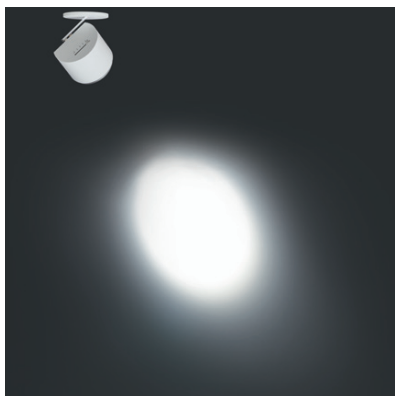
directed light
beam angle approx. 60°

insert: zoom-objektiv 20-60°
soft edge filter

luminous flux: high color 18 W 830 lm
high flux 18 W 1010 lm

head chrome high color 13 W 600 lm
high flux 13 W 750 lm

 collimator



lui K 15

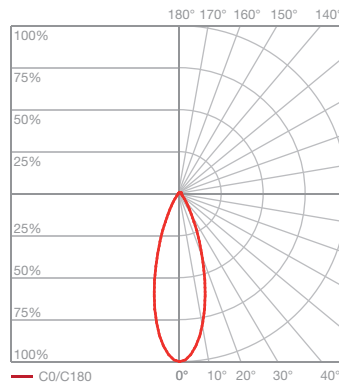
directed light
beam angle approx. 15°

insert: collimator lens
optical filter 15°

luminous flux: high color 18 W 1220 lm
high flux 18 W 1480 lm

head chrome high color 13 W 890 lm
high flux 13 W 1110 lm

lui lighting effects LED



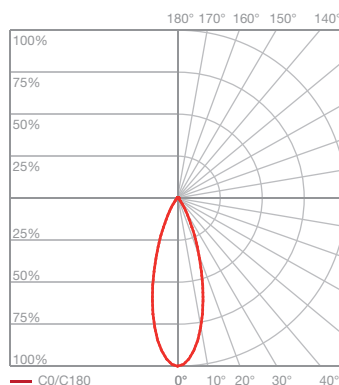
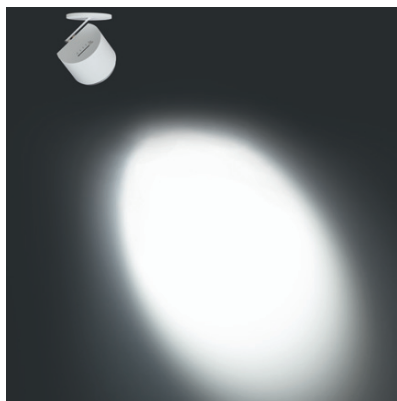
lui K 30

directed light
beam angle approx. 30°

insert: collimator lens
optical filter 30°

luminous flux: high color 18 W 1030 lm
high flux 18 W 1250 lm

head chrome high color 13 W 750 lm
high flux 13 W 940 lm



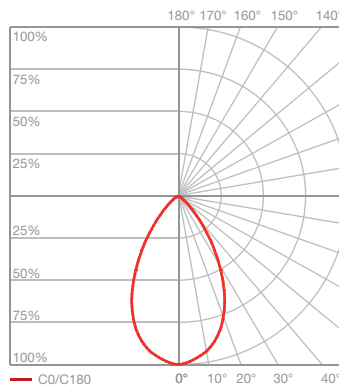
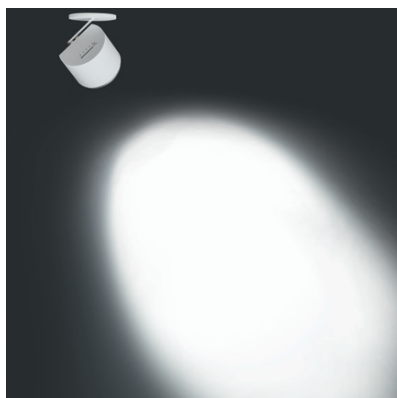
lui K 45

directed light
beam angle approx. 45°

insert: collimator lens
optical filter 45°

luminous flux: high color 18 W 1020 lm
high flux 18 W 1240 lm

head chrome high color 13 W 740 lm
high flux 13 W 930 lm



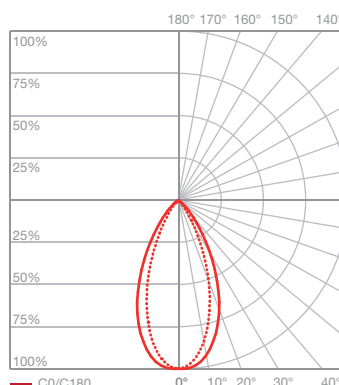
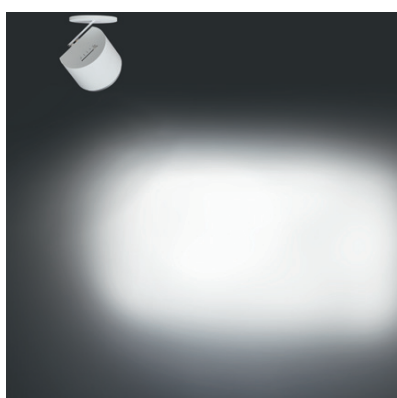
lui K 60

directed light
beam angle approx. 60°

insert: collimator lens
optical filter 60°

luminous flux: high color 18 W 1020 lm
high flux 18 W 1240 lm

head chrome high color 13 W 740 lm
high flux 13 W 930 lm



lui K 60 x 30

directed light
beam angle approx. 60 x 30°

insert: collimator lens
optical filter 60 x 30°

luminous flux: high color 18 W 1020 lm
high flux 18 W 1240 lm

head chrome high color 13 W 740 lm
high flux 13 W 930 lm

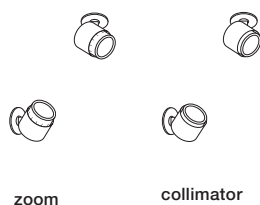
lui pico flat

article numbers

zoom: (20–60°) with soft edge filter
collimator: optical filter 15°/30°/45°/60°/60 × 30° incl. »next generation« LED, power 18 W (head chrome 13 W), dimmable via rear slide control

single-colored versions	color code	bicolored versions	color code	gold versions	color code
chrome	C C C C	chrome–matt black	C S C C	matt white–gold	W G W W
matt chrome	M M M M	matt chrome–matt white	M W M M	matt black–gold	S G S S
matt white	W W W W	matt chrome–matt black	M S M M		
matt black	S S S S				
head + optics + body + base	- - - -	glossy white–matt white	B W W B		
		glossy white–chrome	B C C B		
		matt white–matt chrome	W M M W		
		glossy black–matt black	N S S N		
		glossy black–chrome	N C C N		
		matt black–matt chrome	S M S S		

pico flat



version	high color CRI 95, 2700 K	high color CRI 95, 3000 K	high flux CRI 85, 3000 K	high flux CRI 85, 3500 K	high flux CRI 85, 4000 K
Z	5V70020_ ___	5V70030_ ___	5V70040_ ___	5V70050_ ___	5V70060_ ___
K 15	5V80021_ ___	5V80031_ ___	5V80041_ ___	5V80051_ ___	5V80061_ ___
K 30	5V80023_ ___	5V80033_ ___	5V80043_ ___	5V80053_ ___	5V80063_ ___
K 45	5V80024_ ___	5V80034_ ___	5V80044_ ___	5V80054_ ___	5V80064_ ___
K 60	5V80026_ ___	5V80036_ ___	5V80046_ ___	5V80056_ ___	5V80066_ ___
K 60×30	5V80027_ ___	5V80037_ ___	5V80047_ ___	5V80057_ ___	5V80067_ ___

		art. no.
color filter for zoom	filter red	5K30 2R
	filter green	5K30 2G
	filter blue	5K30 2B
	filter yellow	5K30 2Y
	filter magenta	5K30 2M

Occhio converter* for flat versions	48 V DC, 26 W, dimmable via trailing-edge phase cut, L105 × W65 × H25 mm (mounting through wall/ceiling cut-out ø 68 mm)	6Z 48 54 0Z
---	---	-------------

*compatible dimmers: www.occhio.de/dim_en

lui pico flat installation diagram

art. no.

Occhio converter
mounting through wall/ceiling cut-out ø 68 mm
compatible dimmers: www.occhio.de/dim_en



Occhio converter
48 V DC
L 105 × W 65 × H 25 mm
for connection of 1 head

connection diagrams also valid for up and track versions

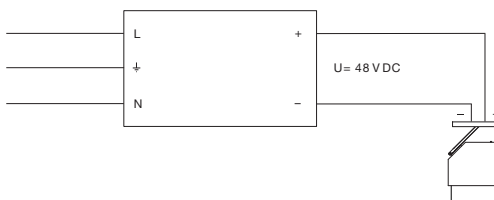
converter for **io/lui** (max. 26 W)

6Z 48 54 0Z

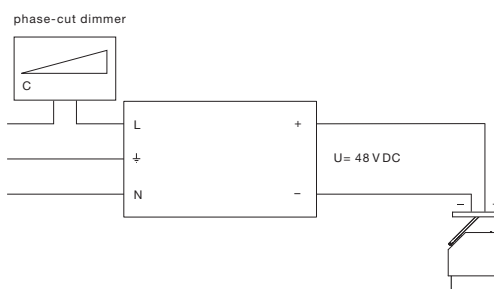
converter for **lei** (max. 10 W)

6Z 48 20 0Z

without external dimming



dimnable via trailing-edge phase cut



art. no.

collective converters
multiple luminaires connected to one
converter not dimmable



48 VDC, 90 W
L 161 × W 61 × H 36 mm
for connection of max. **4 io/lui** heads
for connection of max. **8 lei** heads

6Z 48 18 80



48 VDC, 150 W
L 222 × W 68 × H 39 mm
for connection of max. **6 io/lui** heads
for connection of max. **13 lei** heads

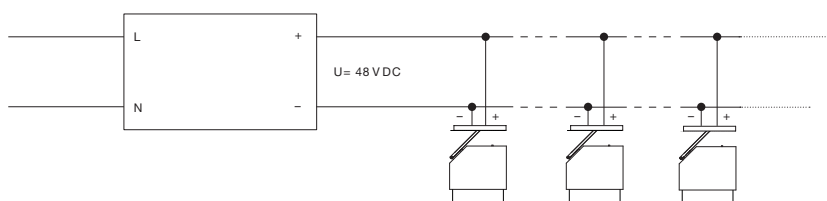
6Z 48 81 50



48 VDC, 320 W
L 252 × W 90 × H 44 mm
for connection of max. **14 io/lui** heads
for connection of max. **29 lei** heads

6Z 48 67 00

without external dimming



lui pico flat »cc« article numbers

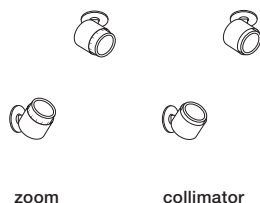
zoom: (20–60°) with soft edge filter

collimator: optical filter 15°/30°/45°/60°/60 × 30°

incl. »next generation« LED, power 18 W ([head chrome 13 W](#)),
connection to constant current source (remote driver),
externally dimmable via leading-/trailing-edge phase cut,
button, DALI depending on power supply unit, without slide control

single-colored versions	color code	bicolored versions	color code	gold versions	color code
chrome	C C C C	chrome–matt black	C S C C	matt white–gold	W G W W
matt chrome	M M M M	matt chrome–matt white	M W M M	matt black–gold	S G S S
matt white	W W W W	matt chrome–matt black	M S M M		
matt black	S S S S				
head + optics + body + base	- - - -	glossy white–matt white	B W W B		
		glossy white–chrome	B C C B		
		matt white–matt chrome	W M M W		
		glossy black–matt black	N S S N		
		glossy black–chrome	N C C N		
		matt black–matt chrome	S M S S		

pico flat



zoom

collimator

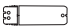


version	high color CRI 95, 2700 K	high color CRI 95, 3000 K	high flux CRI 85, 3000 K	high flux CRI 85, 3500 K	high flux CRI 85, 4000 K
Z	5V70520_	5V70530_	5V70540_	5V70550_	5V70560_
K 15	5V80521_	5V80531_	5V80541_	5V80551_	5V80561_
K 30	5V80523_	5V80533_	5V80543_	5V80553_	5V80563_
K 45	5V80524_	5V80534_	5V80544_	5V80554_	5V80564_
K 60	5V80526_	5V80536_	5V80546_	5V80556_	5V80566_
K 60 × 30	5V80527_	5V80537_	5V80547_	5V80557_	5V80567_

color filter		art. no.
for zoom	filter red	5K30 2R
	filter green	5K30 2G
	filter blue	5K30 2B
	filter yellow	5K30 2Y
	filter magenta	5K30 2M

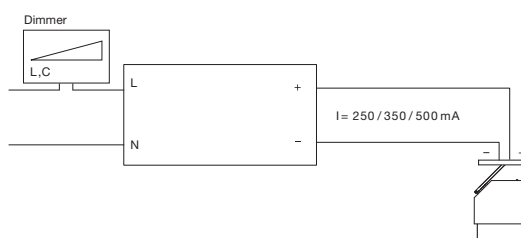
driver mounting through wall/ceiling cut-out ø 68 mm

dimmable via leading-/trailing-edge phase cut		18 W version: 500 mA constant, L 119 × W 53 × H 30 mm	6Z 1855
		13 W version for head chrome: 350 mA constant, L 119 × W 53 × H 25 mm	6Z 13353
dimmable via button/DALI (can be used with emergency power)		18 W version: 500 mA constant, L 207 × W 42 × H 31 mm	6Z 1852
		13 W version for head chrom: 350 mA constant, L 167 × W 42 × H 31 mm	6Z 13352




lui pico flat »cc« installation diagram

		art. no.
driver mounting through wall/ceiling cut-out ø 68 mm	 io/lui head, dimmable via leading/trailing-edge phase cut 18 W: 500 mA constant L119 × W53 × H30 mm for connection of 1 spotlight	6Z 18 55
	 lui head chrome, dimmable via leading/trailing-edge phase cut 13 W: 350 mA constant L119 × W53 × H25 mm for connection of 1 spotlight	6Z 13 35 3
	 lei head, dimmable via leading/trailing-edge phase cut 9 W: 250 mA constant L99 × W39 × H23 mm for connection of 1 luminaire	6Z 09 25 1

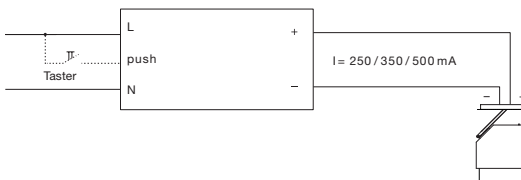
without dimming / dimming via leading / trailing-edge phase cut



art. no.

 io/lui head, dimmable via button/DALI (can be used with emergency power) 18 W: 500 mA constant L207 × W42 × H31 mm for connection of 1 spotlight	6Z 18 52
 lui head chrom, dimmable via button/DALI (can be used with emergency power) 13 W: 350 mA constant L167 × W42 × H31 mm for connection of 1 spotlight	6Z 13 35 2
 lei head, dimmable via DALI (can be used with emergency power) 9 W: 250 mA constant L110 × W52 × H22 mm for connection of 1 luminaire	6Z 09 25 2

without external dimming / dimming via button



dimming via DALI

